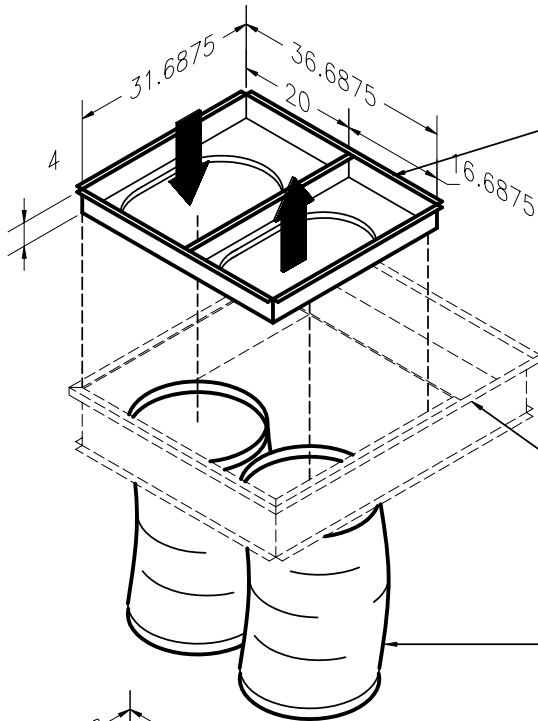


# FLEX DUCT / HARD DUCT CONCENTRIC DIFFUSER ACCESSORIES

## 3-6.5 TON UNIT : 1200-2600 CFM

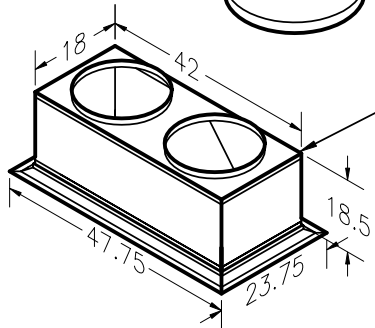


FLEX DUCT ADAPTOR:  
PART# 1305-FA1  
APPROX. WEIGHT 35lbs.

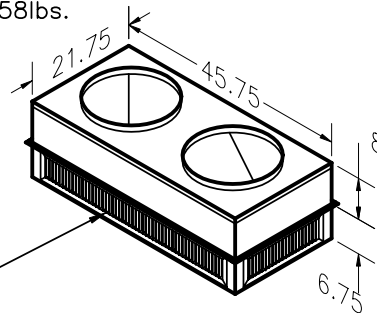
CANFAB'S FLEX DUCT ADAPTOR AND ADAPTOR KITS CONVERT THE SIDE BY SIDE UNIT TO CONCENTRIC APPLICATION. EACH PIECE IS CONSTRUCTED OF HEAVY GAUGE GALVANIZED STEEL. THE ADAPTOR IS INTERNALLY INSULATED WITH 1" - 1.5 LB FIBERGLASS INSULATION AND SHIPPED FULLY ASSEMBLED.

ROOF CURB:  
1005-CB\*\*  
(SEE CURB DWG.)  
NOT INCLUDED IN FULL PACKAGE

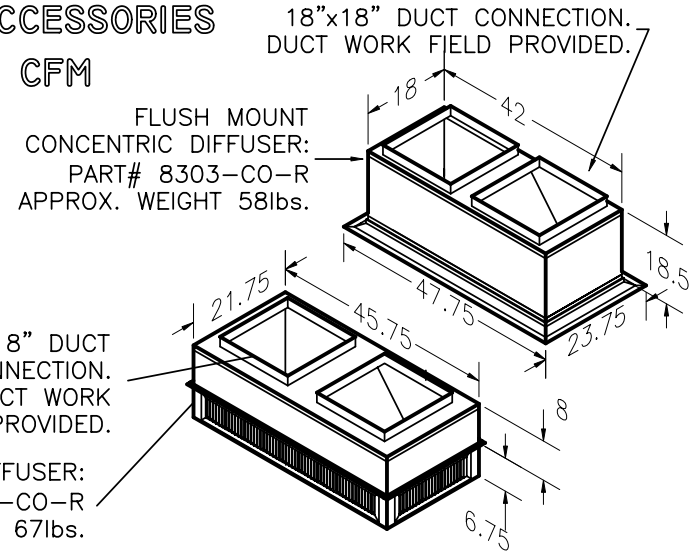
FLEX DUCT KIT:  
(2) 18" x 48"  
PART# 8300-FD182  
APPRX. WEIGHT 15lbs.



FLUSH MOUNT  
CONCENTRIC DIFFUSER:  
PART# 8303-CO  
APPOX. WEIGHT 58lbs.



DROP CONCENTRIC  
DIFFUSER:  
PART# 8304-CO  
APPROX. WEIGHT 67lbs.



FLUSH MOUNT  
CONCENTRIC DIFFUSER:  
PART# 8303-CO-R  
APPROX. WEIGHT 58lbs.

18"x18" DUCT  
CONNECTION.  
DUCT WORK  
FIELD PROVIDED.

DROP CONCENTRIC DIFFUSER:  
PART# 8304-CO-R  
APPROX. WEIGHT 67lbs.

CONCENTRIC TYPE	FULL PACKAGE	DIFFUSER GRILLE	CONCENTRIC ADAPTOR	DUCT KIT	
FLUSH MOUNT	1305F-FDPKG	8303-CO	1305-FA1	8300-FD182	
DROP MOUNT	1305D-FDPKG	8304-CO			
CANFAB PART#	CFM	MIN. THROW(ft)	MAX. THROW(ft)	STATIC PRESS. DROP	NOISE RATING(db)
8303-CO 8303-CO-R FLUSH MOUNT DIFFUSERS	1200	12	16	.26	25
	1400	15	20	.34	30
	1600	17	23	.42	30
	2000	22	29	.62	40
	2400	23	32	.82	45
	2600	25	35	.92	50
CANFAB PART#	CFM	MIN. THROW(ft)	MAX. THROW(ft)	STATIC PRESS. DROP	NOISE RATING(db)
8304-CO 8304-CO-R DROP DIFFUSERS	1200	10	24	.12	15
	1400	12	26	.16	19
	1600	13	28	.21	21
	2000	17	32	.33	30
	2400	19	34	.47	32
	2600	24	42	.55	36



182 GRANITE STREET, SUITE 101, CORONA, CA 92879  
PHONE: (951)278-1830 FAX: (951)278-8444 www.canfab.com canfab@canfab.com

**BRYANT 3 - 6 1/2 TON** 548F 36-72, 548J 04A-07A 549C 24-60, 549J 04A-06A, 551B 36-72, 551C 24-60, 551J 04A-06A, 558F 036-73, 558J 04A-07A, 580D 36-72, 580F 36-73, 580J 04A-07A, 581B 36-72, 581C 24-60, 581J 04A-06A

PART NO: SEE ABOVE	PROJECT
DRAWING NO:	DATE:
APPROVED BY:	DATE: / /