



CANNON FABRICATION INC

182 GRANITE STREET, SUITE 101, CORONA, CA 92879

PHONE: (951)278-1830 FAX: (951)278-8444 www.canfab.com canfab@canfab.com

**BRYANT 3 - 6 1/2 TON** 548F 36-72, 548J 04A-07A 549C 24-60, 549J 04A-06A, 551B 36-72, 551C 24-60, 551J 04A-06A, 558F 036-73, 558J 04A-07A, 580D 36-72, 580F 36-73, 580J 04A-07A, 581B 36-72, 581C 24-60, 581J 04A-06A, 559J 04-06, 582J 04-06

PART NO: SEE BELOW

# 100% BAROMETRIC RELIEF SLIDE-IN HORIZONTAL ECONOMIZER

REPLACES CFI372HA100

SELECT

PRODUCT

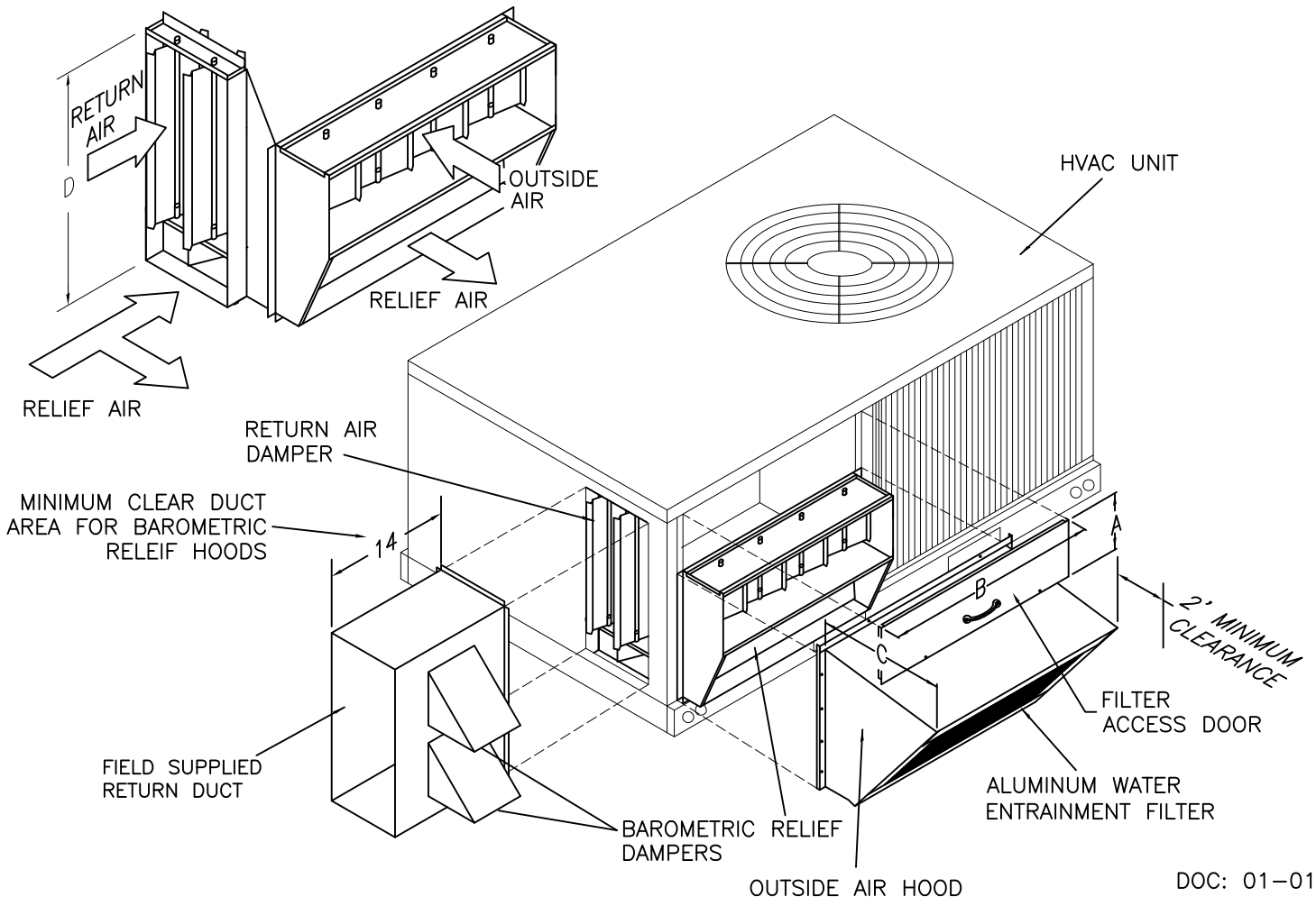
| CANFAB PART # | A     | B    | C    | D       | RELIEF HOOD SIZE | SHIPP. WEIGHT |
|---------------|-------|------|------|---------|------------------|---------------|
| 1105-HEC      | 8.625 | 31.5 | 18.0 | 25.6875 | 2-8 X 8          | 135 LBS.      |

### FEATURES

- COLOR COORDINATED PAINT FINISH.
- 100% BAROMETRIC RELIEF.
- LOW LEAK DAMPER.
- 100% SHUT DOWN UPON LOSS OF POWER.
- HONEYWELL JADE MODULATING DIFFERENTIAL DRYBULB CONTROL SYSTEM.
- OPTIONAL BELIMO LF24SR-US ACTUATOR AVAILABLE. CONTROLS TO BE FIELD SUPPLIED. ADD "B" TO THE END OF THE PART NUMBER. (BELIMO ACTUATOR ONLY, NO OTHER CONTROLS PROVIDED).

1105-HEC

| CFM  | SP IN WG |
|------|----------|
| 2600 | .49      |
| 2400 | .46      |
| 2200 | .43      |
| 2000 | .39      |
| 1800 | .32      |
| 1600 | .25      |
| 1400 | .19      |
| 1200 | .14      |
| 900  | .07      |



DOC: 01-01

PROJECT:

DATE:

ENGINEER:

DISTRIBUTOR:

DRAWING NUMBER: