



182 GRANITE STREET, SUITE 101, CORONA, CA 92879

PHONE: (951)278-1830 FAX: (951)278-8444 www.canfab.com canfab@canfab.com

**BRYANT 3 - 6 1/2 TON** 548F 36-72, 548J 04A-07A 549C 24-60, 549J 04A-06A, 551B 36-72, 551C 24-60, 551J 04A-06A, 558F 036-73, 558J 04A-07A, 580D 36-72, 580F 36-73, 580J 04A-07A, 581B 36-72, 581C 24-60, 581J 04A-06A, 559J 04-06, 582J 04-06

PART NO: SEE BELOW

## VIBRATION ISOLATION CURB REPLACES CF4850DJ036-72\*SOCR

**SELECT PRODUCT**

	CANFAB PART#	BASE CURB HEIGHT	APPROXIMATE SHIPPING WEIGHT
<input type="checkbox"/>	1006-IC08A	8"	220
<input type="checkbox"/>	1006-XIC08A	8"	225
<input type="checkbox"/>	1006-IC11A	11"	232
<input type="checkbox"/>	1006-XIC11A	11"	237
<input type="checkbox"/>	1006-IC14A	14"	244
<input type="checkbox"/>	1006-XIC14A	14"	249
<input type="checkbox"/>	1006-IC18A	18"	260
<input type="checkbox"/>	1006-XIC18A	18"	265
<input type="checkbox"/>	1006-IC24A	24"	284
<input type="checkbox"/>	1006-XIC24A	24"	289
<input type="checkbox"/>	1006-IC36A	36"	332
<input type="checkbox"/>	1006-XIC36A	36"	337

**FEATURES**

- USE 1006-XIC FOR UNITS WITH CENTRIFUGAL BLOWER POWER EXHAUST. ALL OTHER USE 1006-IC.
- SHIPPED FULLY WELDED AND ASSEMBLED.
- FULL PERIMETER BASE CURB, WOOD NAILER, RAIL, FLASHING AND WATER AND AIR BARRIER.
- SPRING ISOLATION WITH 2" STATIC DEFLECTION AND EARTHQUAKE RESTRAINTS (OSHPD APPROVED).
- WEATHER TIGHT ACCESS DOORS AT EACH ISOLATOR LOCATION FOR ADJUSTMENT.
- OTHER AVAILABLE OPTIONS INCLUDE SINGLE PITCH AND COMPOUND PITCH.

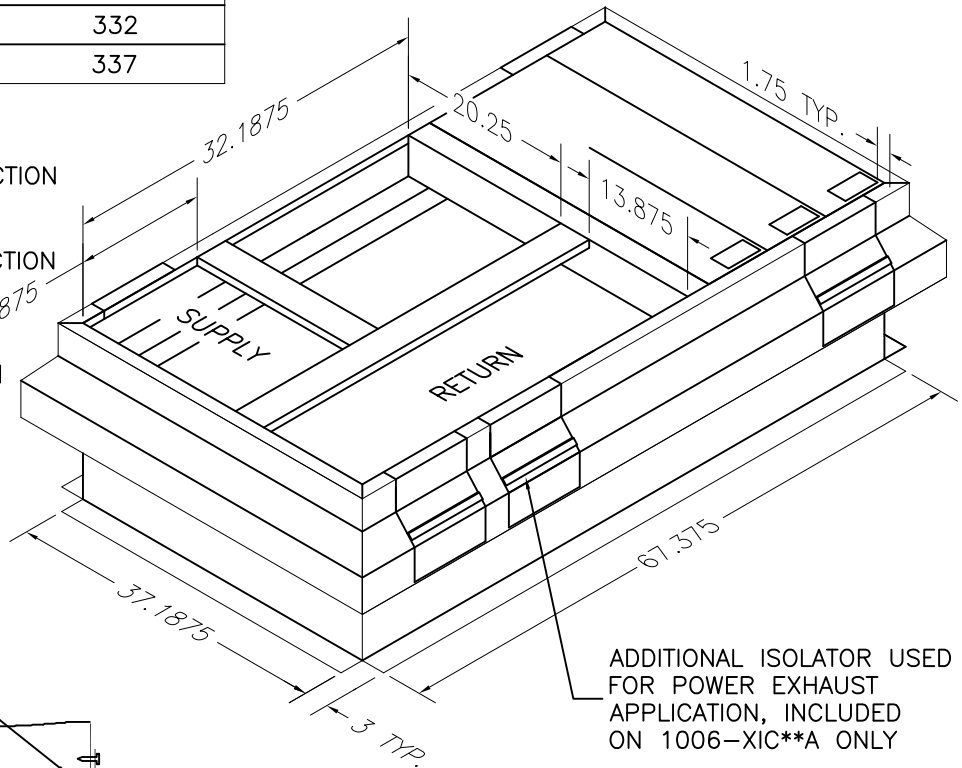
NOTE: FINISH HEIGHT IS 12.5" TALLER THAN THE BASE CURB HEIGHT.

**SELECT CONSTRUCTION**

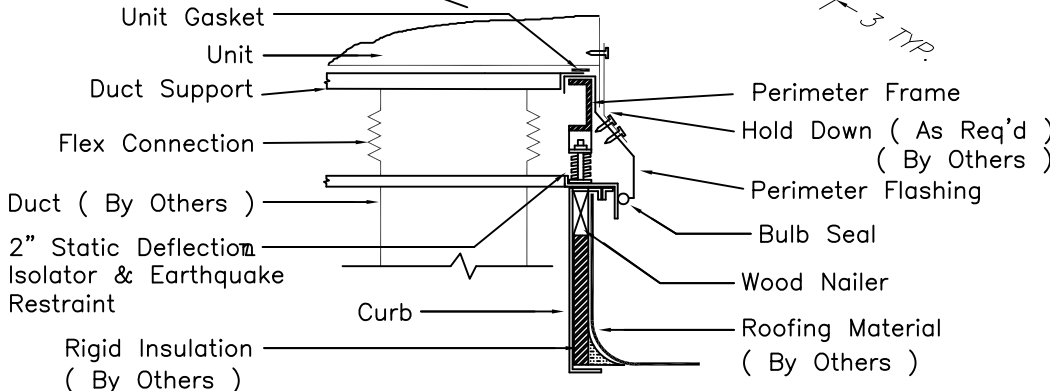
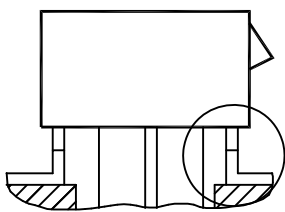
- A=STANDARD WELDED CONSTRUCTION (SHOWN ABOVE).
- E=STANDARD WELDED CONSTRUCTION EXTERNALLY INSULATED.
- C=CUSTOM CONSTRUCTION.

**SELECT IF PITCHED (INCLUDE PITCH ORIENTATION FORM)**

- PITCHED



ADDITIONAL ISOLATOR USED FOR POWER EXHAUST APPLICATION, INCLUDED ON 1006-XIC\*\*A ONLY



DOC: 02-02

PROJECT:

DATE:

ENGINEER:

DISTRIBUTOR:

DRAWING NUMBER: