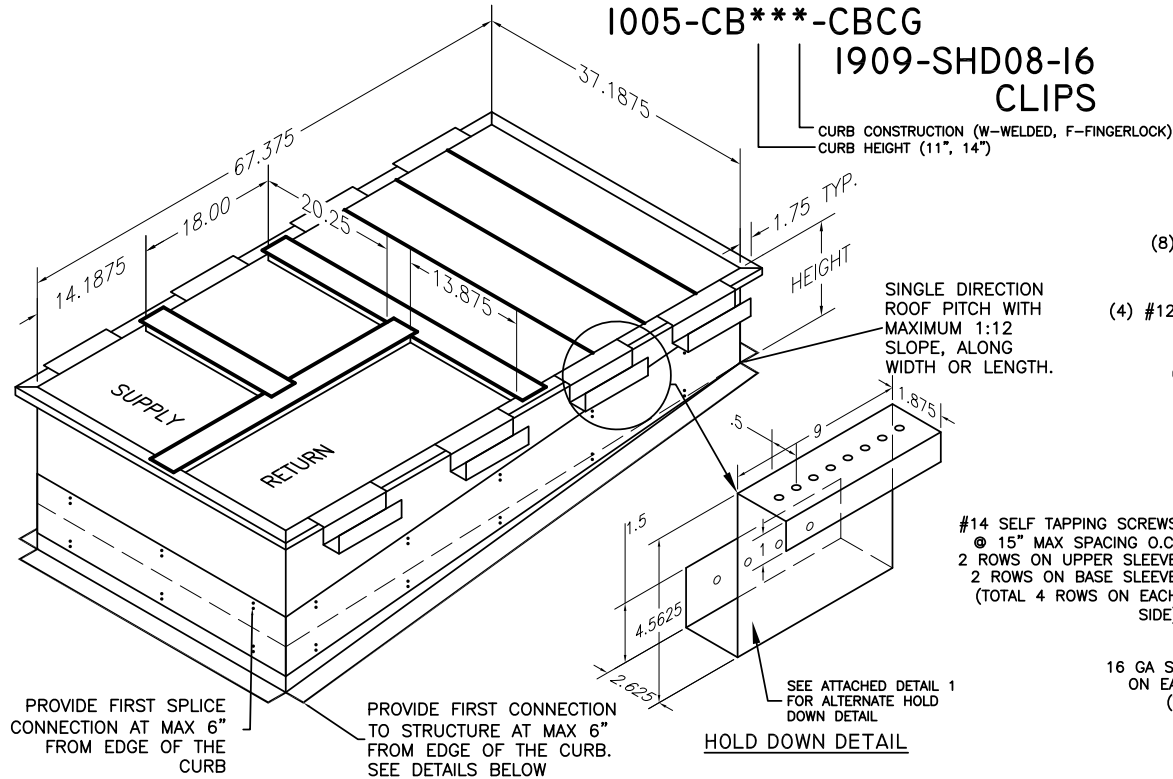


1005-CB*-CBCG
1909-SHD08-16
CLIPS**



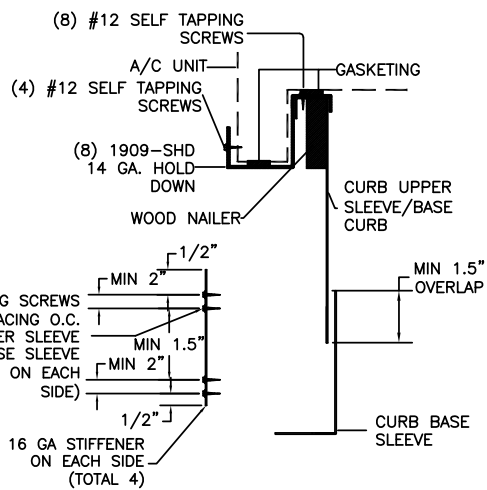
CURB CONSTRUCTION
 1) WELDED
 2) FINGERLOCK
 -ALL WELDING CONSTRUCTION CERTIFIED TO ANSI/AWS D1.3 STRUCTURAL WELDING CODE-SHEET METAL
 -SELF-DRILLING SCREW SHALL MEET ASTM C1513 SPECIFICATION AND INSTALLED PER AISI-S100
 -NO GAP IS ALLOWED BETWEEN TWO METAL SHEET SURFACES WHERE SHEET METAL SCREW IS CONNECTED

ALL WORK SHALL CONFORM TO THE STANDARD OF 2015 INTERNATIONAL BUILDING CODE & 2016 CALIFORNIA BUILDING CODE.

SEISMIC DESIGN CRITERIA
 -SDS = 1.5 $\alpha_p = 2.5$
 -I = 1.5 $R_p = 6.0$

WIND DESIGN CRITERIA
 -MAX 60 FT TALL BUILDING
 -EXPOSURE C
 -130 MPH, 3 SECOND GUST WIND

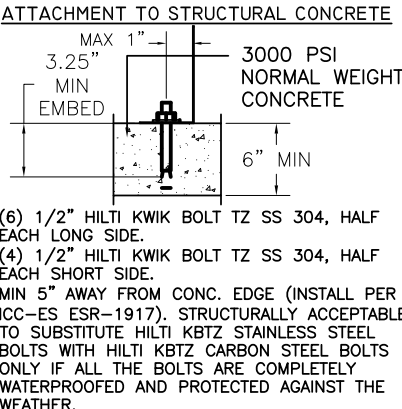
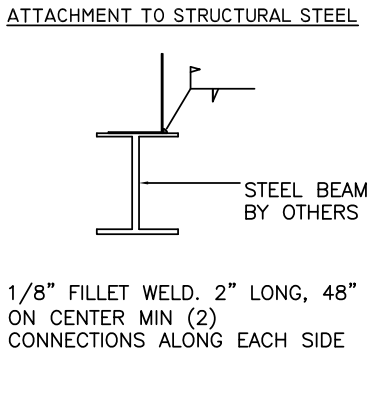
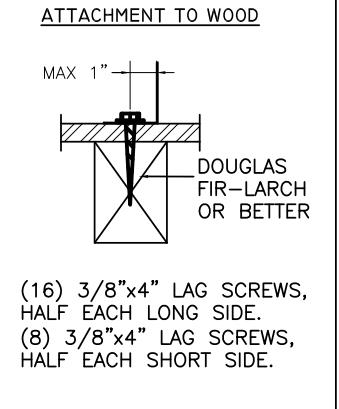
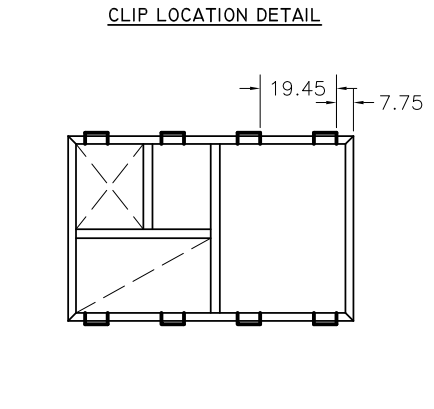
NOTE:
 INSTALLER TO VERIFY WITH A LICENSED STRUCTURAL ENGINEER IN THE CORRESPONDING STATE THE ADEQUACY OF THE STRUCTURE FOR LOADS IMPOSED BY THE UNIT AND THE CURB IN ADDITION TO ALL OTHER LOADS.
 -INSTALLER TO VERIFY WITH A LICENSED STRUCTURAL ENGINEER IN THE CORRESPONDING STATE THAT THE SEISMIC AND WIND DESIGN CRITERIA NOTED ON THIS DRAWING ARE ADEQUATE FOR THE SITE SPECIFIC VALUES. OTHERWISE, CONTACT CANNON FABRICATION FOR A SITE SPECIFIC ANALYSIS AND DRAWINGS.



CURB AND UNIT INFORMATION
 16 GAUGE GALVANIZED STEEL CURB
 1005-CB11*-CBCG 11" 187 LBS.
 1005-CB14*-CBCG 14" 200 LBS.

MAX UNIT OPERATING WEIGHT 900 LBS
 CGX FROM CORNER = 34.13" PARALLEL TO LENGTH
 CGY FROM CORNER = 21.63" PARALLEL TO WIDTH
 CGH FROM BOTTOM OF UNIT = 20.25"

ANCHORAGE DETAILS TO ROOF:



STRUCTURAL REVIEW BY:

MARTIN & associates

JOHN A. MARTIN AND ASSOCIATES
 Structural Engineers
 950 South Grand Ave., 4th Floor
 Los Angeles, California 90015
 Phone (213) 483 6490
 Fax (213) 483 3084
 Job No.: 13001



CanFab
 CANNON FABRICATION INC

182 GRANITE STREET, SUITE 101, CORONA, CA 92879
 PHONE: (951)278-1830 FAX: (951)278-8444 www.canfab.com canfab@canfab.com

FOR: BRYANT 3 - 6 1/2 TON 548F 36-72, 548J 04A-07A 549C 24-60, 549J 04A-06A, 551B 36-72, 551C 24-60, 551J 04A-06A, 558F 036-73, 558J 04A-07A, 580D 36-72, 580F 36-73, 580J 04A-07A, 581B 36-72, 581C 24-60, 581J 04A-06A 559J 04-06 582J 04-06

PART NO: PROJECT:
 ENGINEER: DISTRIBUTOR:
 DRAWING NO: DATE:
 APPROVED BY: DATE: / /