

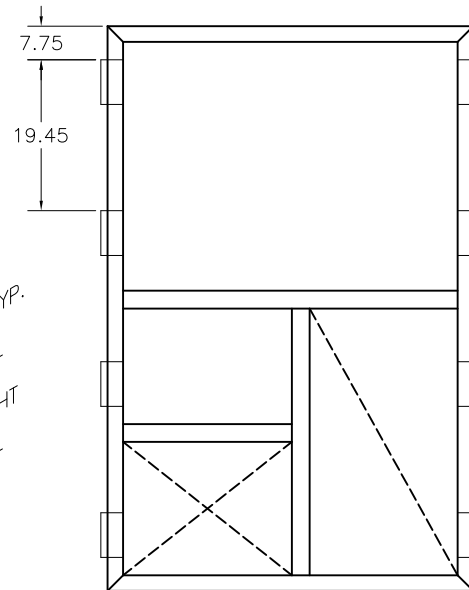
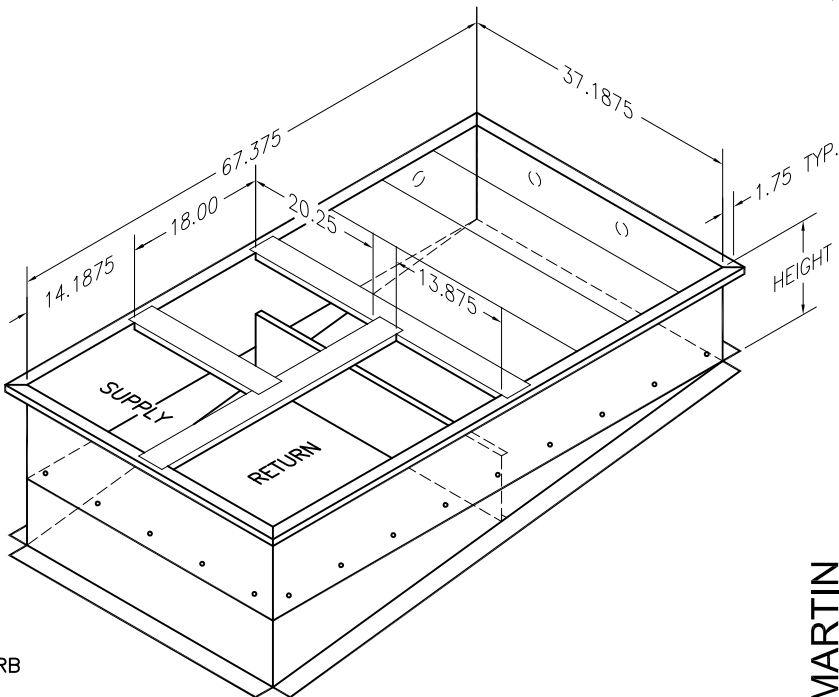
# STRUCTURALLY CALCULATED ROOF CURB CBC COMPLIANT WITH IBC 2009, CBC 2010, ASCE/SEI 7-05

SELECT PRODUCT	CANFAB PART #	BASE CURB HEIGHT	APPROXIMATE SHIPPING WEIGHT
<input type="checkbox"/>	1005-CB08F-GCBC	8"	121 LBS.
<input type="checkbox"/>	1005-CB11F-GCBC	11"	130 LBS.
<input type="checkbox"/>	1005-CB14F-GCBC	14"	139 LBS.
<input type="checkbox"/>	1005-CB18F-GCBC	18"	151 LBS.

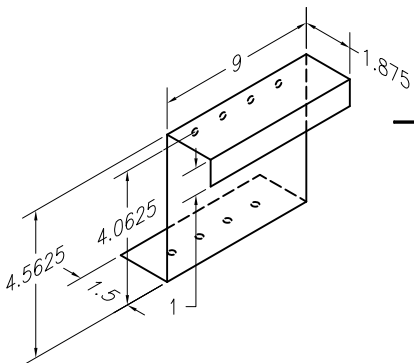
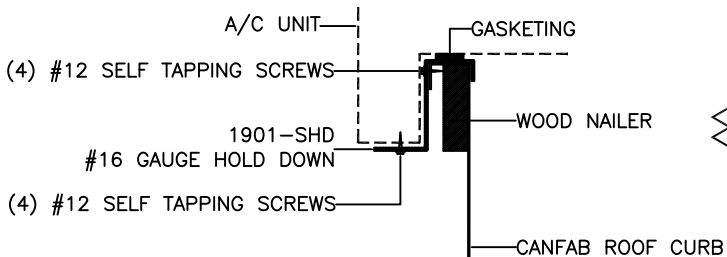
- - ROOF CURB IS MIN 16 GA. GALVANIZED STEEL.
- - FULL PERIMETER WOOD NAILER PROVIDED.
- - GASKET MATERIAL & ASSEMBLY HARDWARE PROVIDED.
- - TOP CORNERS ARE MITRED.
- - CURBS ARE SHIPPED KNOCKED DOWN.

### SELECT CONSTRUCTION

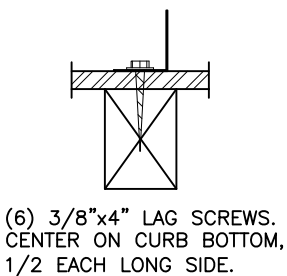
- A=STANDARD BOLT TOGETHER CONSTRUCTION (SHOWN ABOVE).
- E=STANDARD BOLT TOGETHER CONSTRUCTION EXTERNALLY INSULATED.
- F=FINGERLOCK CONSTRUCTION HEAVY GA. GALVANIZED STEEL (ONLY AVAILABLE ON 11" AND 14" MODELS).
- G=FINGERLOCK CONSTRUCTION EXTERNALLY INSULATED HEAVY GAUGE GALVANIZED STEEL (ONLY AVAILABLE ON 11" AND 14" MODELS).



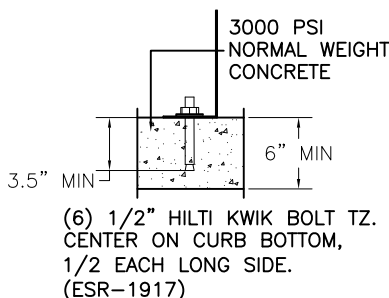
CURB PLAN



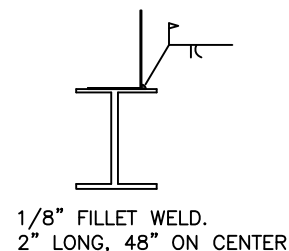
#### ATTACHMENT TO WOOD



#### ATTACHMENT TO CONCRETE



#### ATTACHMENT TO STEEL



### STRUCTURAL REVIEW BY:



JOHN A. MARTIN AND ASSOCIATES  
Structural Engineers  
950 South Grand Ave., 4th Floor  
Los Angeles, California 90015  
Phone (213) 483 6490  
Fax (213) 483 3084  
Job No.: 13001

SCALE: NTS



182 GRANITE STREET, SUITE 101, CORONA, CA 92879

PHONE: (951)278-1830 FAX: (951)278-8444 www.canfab.com canfab@canfab.com

**BRYANT 3 - 6 1/2 TON** 548F 36-72, 548J 04A-07A 549C 24-60, 549J 04A-06A, 551B 36-72, 551C 24-60, 551J 04A-06A, 558F 036-73, 558J 04A-07A, 580D 36-72, 580F 36-73, 580J 04A-07A, 581B 36-72, 581C 24-60, 581J 04A-06A  
559J 04-06 582J 04-06

PART NO: SEE ABOVE

PROJECT

DRAWING NO:

DATE:

APPROVED BY:

DATE: / /