



182 GRANITE STREET, SUITE 101, CORONA, CA 92879

PHONE: (951)278-1830 FAX: (951)278-8444 www.canfab.com canfab@canfab.com

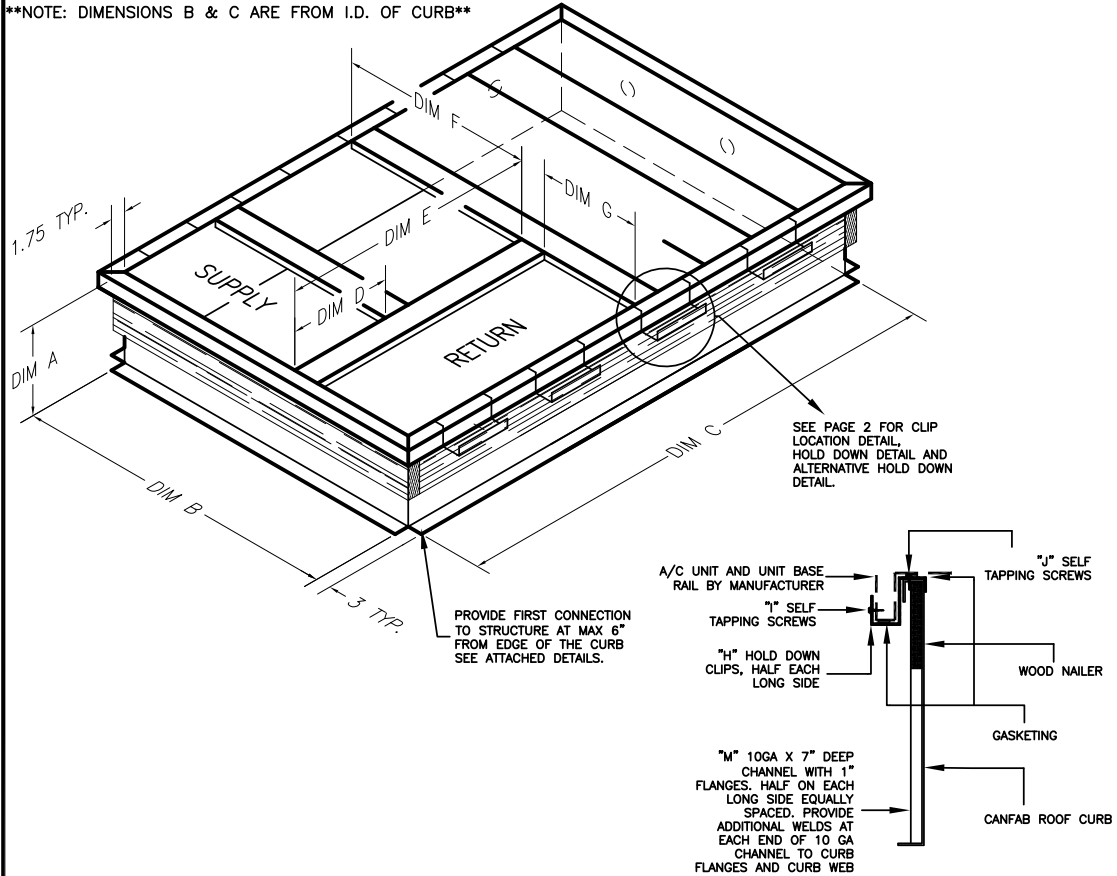
FOR: GROUP A

BRYANT 3 - 6 1/2 TON
 548F 36-72, 548J 04A-07A 549C 24-60, 549J 04A-06A, 551B 36-72, 551C 24-60, 551J 04A-06A, 558F 036-73, 558J 04A-07A, 580D 36-72, 580F 36-73, 580J 04A-07A, 581B 36-72, 581C 24-60, 581J 04A-06A, 559J 04-06, 582J 04-06

PART NO: 1005-CB

DIM A	DIM B	DIM C	DIM D	DIM E	DIM F	DIM G	DIM H
VARIES MAX 36" SEE TABLE 3	37.1875"	67.375"	14.1875"	32.1875"	20.25"	13.875"	N/A

NOTE: DIMENSIONS B & C ARE FROM I.D. OF CURB



ALL WORK SHALL CONFORM TO THE STANDARD OF 2018 INTERNATIONAL BUILDING CODE & 2019 CALIFORNIA BUILDING CODE.

SEISMIC DESIGN CRITERIA

-SDS = 1.5 ap = 2.5
 -I = 1.5 Rp = 6.0

WIND DESIGN CRITERIA

-MAX 60 FT TALL BUILDING
 -EXPOSURE C
 -175 MPH, 3 SECOND GUST WIND

NOTE:

INSTALLER TO VERIFY WITH A LICENSED STRUCTURAL ENGINEER IN THE CORRESPONDING STATE THE ADEQUACY OF THE STRUCTURE FOR LOADS IMPOSED BY THE UNIT AND THE CURB IN ADDITION TO ALL OTHER LOADS.
 -INSTALLER TO VERIFY WITH A LICENSED STRUCTURAL ENGINEER IN THE CORRESPONDING STATE THAT THE SEISMIC AND WIND DESIGN CRITERIA NOTED ON THIS DRAWING ARE ADEQUATE FOR THE SITE SPECIFIC VALUES. OTHERWISE, CONTACT CANNON FABRICATION FOR A SITE SPECIFIC ANALYSIS AND DRAWINGS.

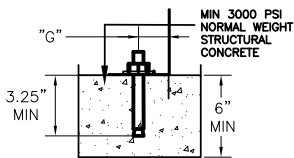
CURB CONSTRUCTION

1) WELDED
 2) BOLTED
 3) FINGERLOCK
 -ALL WELDING CONSTRUCTION CERTIFIED TO ANSI/AWS D1.3 STRUCTURAL WELDING CODE-SHEET METAL
 -SELF-DRILLING SCREW SHALL MEET ASTM C1513 SPECIFICATION AND INSTALLED PER AISI-S100
 -NO GAP IS ALLOWED BETWEEN TWO METAL SHEET SURFACES WHERE SHEET METAL SCREW IS CONNECTED

CURB AND UNIT INFORMATION

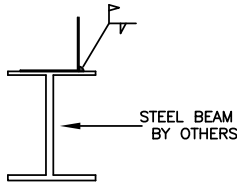
"A" GAUGE GALVANIZED STEEL CURB
 -SEE TABLE 3 FOR ALLOWABLE CURB AND UNIT DIMENSIONAL AND WEIGHT
 -SEE TABLE 4 FOR TABULATED CURB AND ANCHORAGE INFORMATION PER VARYING CURB HEIGHT
 -ALPHA DESIGNATIONS "A" THRU "M", CAN BE FOUND ON TABLE 4, PAGE 3

ATTACHMENT TO STRUCTURAL CONCRETE



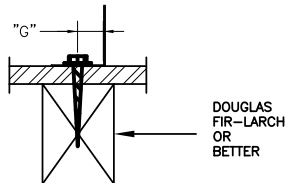
"B" 1/2" HILTI KWIK BOLT TZ SS 304, HALF EACH LONG SIDE.
 "C" 1/2" HILTI KWIK BOLT TZ SS 304, HALF EACH SHORT SIDE.
 NOTE:
 -MIN 5" AWAY FROM THE NEAREST CONCRETE EDGE (INSTALL PER ICC-ES ESR-1917).
 -STRUCTURALLY ACCEPTABLE TO SUBSTITUTE HILTI KBTZ STAINLESS STEEL BOLTS WITH HILTI KBTZ CARBON STEEL BOLTS ONLY IF ALL THE BOLTS ARE COMPLETELY WATERPROOFED AND PROTECTED AGAINST THE WEATHER.
 -BOLTS SHALL BE EQUALLY SPACED

ATTACHMENT TO STRUCTURAL STEEL



1/8" FILLET WELD, 2" LONG, "D" ON CENTER.
 NOTE:
 -PROVIDE MIN 2 CONNECTIONS WHERE THE CURB SIDE IS SHORTER THAN THE WELD SPACING.
 -PROVIDE WELDS ON ALL SIDES

ATTACHMENT TO WOOD



"E" 3/8"x4" LAG SCREWS, HALF EACH LONG SIDE.
 "F" 3/8"x4" LAG SCREWS, HALF EACH SHORT SIDE.
 NOTE:
 -SCREWS SHALL BE EQUALLY SPACED.

STRUCTURAL REVIEW BY:

MARTIN & associates
 JOHN A. MARTIN AND ASSOCIATES
 Structural Engineers
 950 South Grand Ave., 4th Floor
 Los Angeles, California 90015
 Phone (213) 483 8490
 Fax (213) 483 3084
 Job No.: 19022



3/22/2019

PROJECT: IBC 2018 UPDATE/ CBC 2019 UPDATE

DATE: 3.12.19

ENGINEER: LD

DISTRIBUTOR:

DRAWING NUMBER: GROUP_A.DWG

PAGE 1 OF 3



CANNON FABRICATION INC

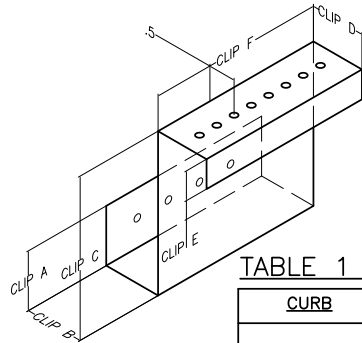
182 GRANITE STREET, SUITE 101, CORONA, CA 92879

PHONE: (951)278-1830 FAX: (951)278-8444 www.canfab.com canfab@canfab.com

FOR: GROUP A

PART NO: SEE BELOW

HOLD DOWN DETAIL



NOTE:
SEE TABLE 1 FOR DESIGNATED HOLD DOWN CLIP PER CURB

TABLE 1 HOLD DOWN CLIP PER CURB

CURB	CLIP	GAUGE	CLIP A [IN]	CLIP B [IN]	CLIP C [IN]	CLIP D [IN]	CLIP E [IN]	CLIP F [IN]
1005/6059	1909-SHD8-12	12 GA	1.5	2.625	4.5625	1.875	1.0	9.0
3003	3901-SHD8-12	12 GA	1.0	4.81	3.875	2.125	1.0	9.0
4027	4901-SHD8-12	12 GA	2.0	3.0625	4.625	1.875	1.0	9.0
6037	6907-SHD8-12	12 GA	2.0	2.0	3.25	1.875	1.0	9.0

STRUCTURAL REVIEW BY:
MARTIN & associates
JOHN A. MARTIN AND ASSOCIATES
Structural Engineers
950 South Grand Ave., 4th Floor
Los Angeles, California 90015
Phone (213) 483 6490
Fax (213) 483 3084
Job No.: 19022

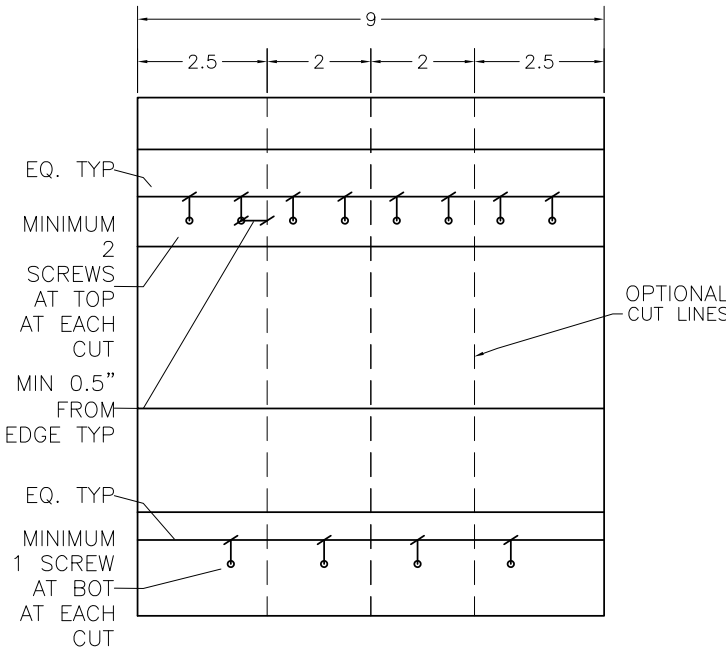


3/22/2019

ALTERNATIVE HOLD DOWN DETAIL

NOTE:
APPLICABLE ONLY FOR 9" LONG HOLD DOWN WITH (8) SCREWS AT TOP AND (4) SCREWS AT BOT EQUALLY SPACED

1. INFORMATION SHOWN ON THE STAMPED CANFAB CURB DRAWING IS THE MINIMUM REQUIREMENTS FOR THE CURB CONSTRUCTION AND INSTALLATION. NO STRUCTURAL OBJECTION TO THE USE OF LARGER SIZE SCREWS AND THICKER GAUGE SHEET METAL THAN THE INFORMATION SHOWN ON THE STAMPED CANFAB CURB DRAWING.
2. NO STRUCTURAL OBJECTION TO SHIFTING THE ATTACHMENT CLIPS ALONG THE CURB. FIRST AND LAST CLIP IN THE SERIES OF CLIPS SHALL BE LOCATED PER CLIP LOCATION DETAIL PER STAMPED CANFAB CURB DRAWING. DISTANCE SHIFTED SHALL NOT BE LARGER THAN THE LENGTH OF THE CLIP.
3. NO STRUCTURAL OBJECTION TO CUTTING THE ATTACHMENT CLIPS PER REQUIREMENTS AS SHOWN ON BELOW SKETCH.



CLIP LOCATION DETAIL

NOTE:
SEE TABLE 2 FOR CLIP LOCATION

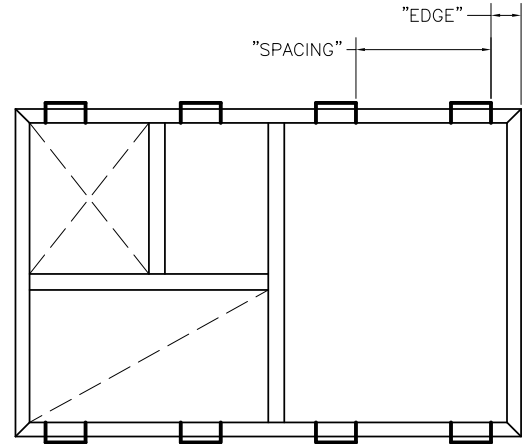


TABLE 2 CLIP LOCATION

CURB	EDGE [IN]	SPACING [IN]
1005/6059	7.75	15.46
3003	7.75	19.00
4027	7.75	18.33
6037	7.75	13.58

PROJECT: IBC 2018 UPDATE/ CBC 2019 UPDATE

DATE: 3.12.19

ENGINEER: LD

DISTRIBUTOR:

DRAWING NUMBER: GROUP_A.DWG

PAGE 2 OF 3



182 GRANITE STREET, SUITE 101, CORONA, CA 92879

PHONE: (951)278-1830 FAX: (951)278-8444 www.canfab.com canfab@canfab.com

FOR: GROUP A

PART NO: SEE BELOW

TABLE 3 ALLOWABLE CURB AND UNIT DIMENSION AND WEIGHT

STRUCTURAL REVIEW BY:
MARTIN & associates
 JOHN A. MARTIN AND ASSOCIATES
 Structural Engineers
 950 South Grand Ave., 4th Floor
 Los Angeles, California 90015
 Phone (213) 483 6490
 Fax (213) 483 3084
 Job No.: 19022



3/22/2019

RELATED CURBS	LCURB [IN]	WCURB [IN]	HCURB [IN]	WTCURB [LBS]	LUNIT [IN]	WUNIT [IN]	HUNIT [IN]	WTUNIT [LBS]	CG LONG [IN]	CG SHORT [IN]	CG HEIGHT [IN]
1005	SEE PAGE 1	SEE PAGE 1	MIN 8	MIN 110	74.375	46.75	41.375	MAX 900	34.625	22.5	20.25
			11	127							
			14	144							
			18	166							
			24	262							
			MAX 36	MAX 354							
3003	SEE PAGE 1	SEE PAGE 1	MIN 8	MIN 82	82.25	44.875	32.625	MAX 900	38.6	18.75	HUNIT/2
			11	99							
			14	115							
			18	137							
			24	225							
			MAX 36	MAX 316							
4027	SEE PAGE 1	SEE PAGE 1	MIN 8	MIN 91	83.25	45	43.375	MAX 1316	47	22	HUNIT/2
			11	109							
			14	127							
			18	151							
			24	238							
			MAX 36	MAX 355							
6037	SEE PAGE 1	SEE PAGE 1	MIN 8	MIN 111	69.875	44.25	40.875	MAX 1202	44	22	HUNIT/2
			11	124							
			14	141							
			18	162							
			24	256							
			MAX 36	MAX 345							
6059	SEE PAGE 1	SEE PAGE 1	MIN 8	MIN 112	76.841	47.934	42.004	MAX 869	42	29	HUNIT/2
			11	129							
			14	146							
			18	169							
			24	265							
			MAX 36	MAX 358							

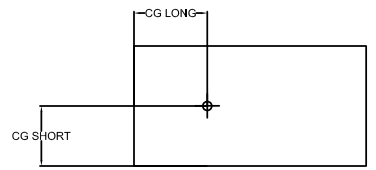


TABLE 4 TABULATED CURB AND ANCHORAGE INFORMATION PER VARYING HEIGHT

		0 < H ≤ 18"	18" < H ≤ 22"	22" < H ≤ 30"	30" < H ≤ 36"
A	CURB THICKNESS	14 GA	14 GA	12 GA	12 GA
B	EXP. ANCHOR	6	6	6	8
C	EXP. ANCHOR	4	4	4	4
D	WELD	36"	36"	36"	24"
E	SCREWS	16	18	20	22
F	SCREWS	8	8	10	12
G	DISTANCE	MAX 0.75"	MAX 0.75"	MAX 0.75"	MAX 0.75"
H	NO. OF CLIPS	8	8	8	8
I	CLIP SMS	(4) #12	(4) #12	(4) #12	(4) #12
J	CLIP SMS	(8) #12	(8) #12	(8) #12	(8) #12
K	ISO RAIL	N/A	N/A	N/A	N/A
L	NO. OF ISOLATORS	N/A	N/A	N/A	N/A
M	NO. OF STIFFENERS	N/A	N/A	N/A	(6)

PROJECT: IBC 2018 UPDATE/ CBC 2019 UPDATE

DATE: 3.12.19

ENGINEER: LD

DISTRIBUTOR:

DRAWING NUMBER: GROUP_A.DWG

PAGE 3 OF 3



182 GRANITE STREET, SUITE 101, CORONA, CA 92879

PHONE: (951)278-1830 FAX: (951)278-8444 www.canfab.com canfab@canfab.com

FOR:

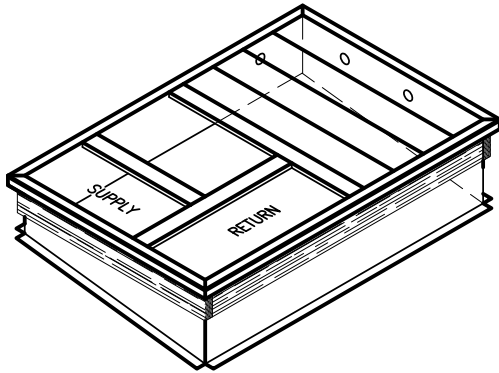
PART NO:

PITCHED ROOF CURB

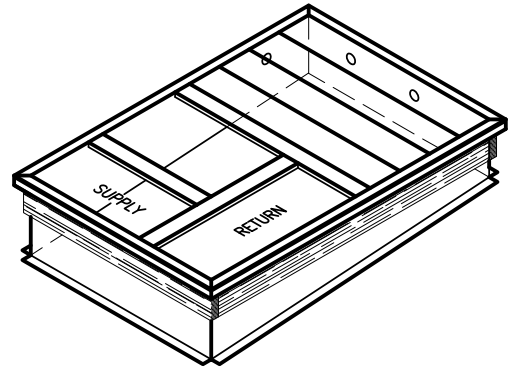
DRAWING MUST ACCOMPANY ALL PITCHED CURB ORDERS

APPLIES TO STANDARD AND ISOLATION CURBS

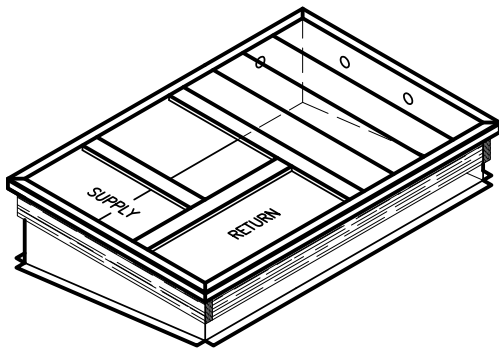
(A)



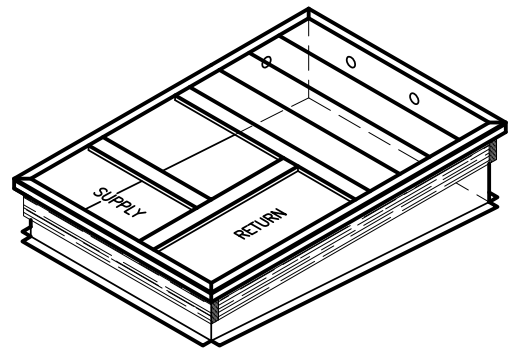
(B)



(C)



(D)



_____ ON 12"

(CIRCLE A, B, C OR D TO SPECIFY DUCT PLACEMENT)

PROJECT:

DATE: 01.08.19

ENGINEER:

DISTRIBUTOR:

DRAWING NUMBER: