



CANNON FABRICATION INC

182 GRANITE STREET, SUITE 101, CORONA, CA 92879

PHONE: (951)278-1830 FAX: (951)278-8444 www.canfab.com canfab@canfab.com

BRYANT 3 - 6 1/2 TON 548F 36-72, 548J 04A-07A 549C 24-60, 549J 04A-06A, 551B 36-72, 551C 24-60, 551J 04A-06A, 558F 036-73, 558J 04A-07A, 580D 36-72, 580F 36-73, 580J 04A-07A, 581B 36-72, 581C 24-60, 581J 04A-06A, 559J 04-06, 582J 04-06

PART NO: SEE BELOW

SMALL COMERCIAL BURGLAR BAR SLEEVES

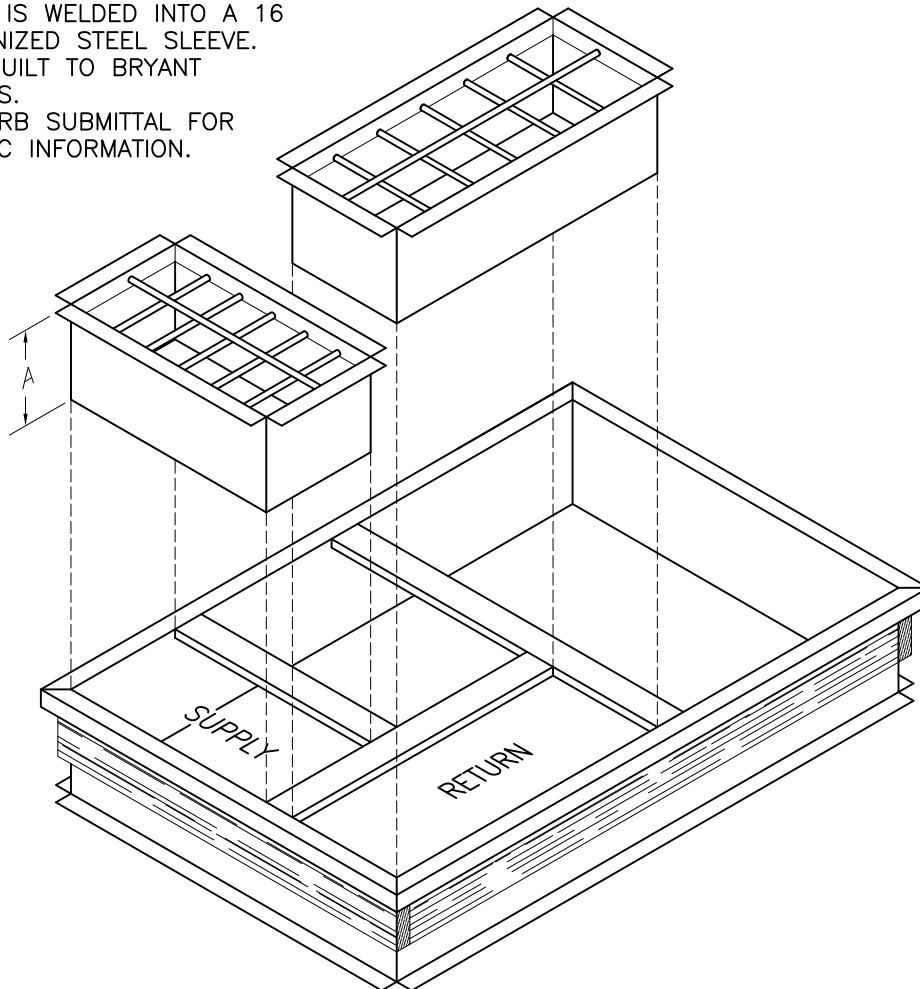
48/50HJ*/TC/TF*/TJ*/TM 004-007, TCQ 004-007

SELECT PRODUCT

BURGLAR BAR PART #	CURB PART #	"A"	APPROXIMATE SHIPPING WEIGHT
1005-BB	1005-CB/1006-IC	12	75 LBS.

FEATURES

- 1 - BARS ARE .5" ROUND STEEL WELDED ON 6" CENTERS IN A .25"x1.5" FLAT STEEL FRAME.
- 2 - STEEL FRAME IS WELDED INTO A 16 GAUGE GALVANIZED STEEL SLEEVE.
- 3 - CURBS ARE BUILT TO BRYANT SPECIFICATIONS.
- 4 - REFER TO CURB SUBMITTAL FOR CURB SPECIFIC INFORMATION.



PROJECT:

DATE:

ENGINEER:

DISTRIBUTOR:

DRAWING NUMBER: