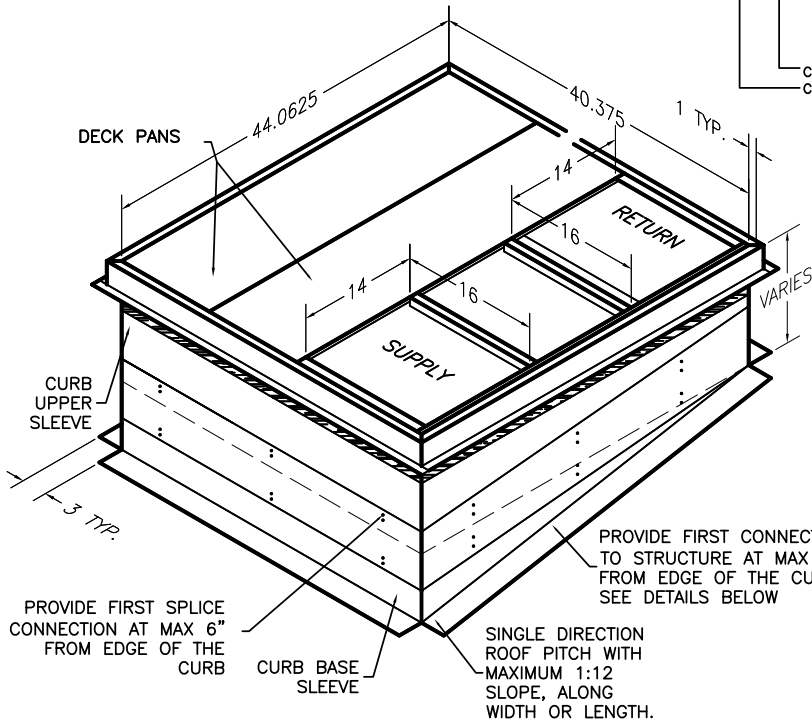


1003A-CB***-CBCG



CURB CONSTRUCTION (W-WELDED, F-FINGERLOCK)
CURB HEIGHT (11", 14")

CURB CONSTRUCTION

- 1) WELDED
 - 2) FINGERLOCK
- ALL WELDING CONSTRUCTION CERTIFIED TO ANSI/AWS D1.3 STRUCTURAL WELDING CODE-SHEET METAL
-SELF-DRILLING SCREW SHALL MEET ASTM C1513 SPECIFICATION AND INSTALLED PER AISI-S100
-NO GAP IS ALLOWED BETWEEN TWO METAL SHEET SURFACES WHERE SHEET METAL SCREW IS CONNECTED

ALL WORK SHALL CONFORM TO THE STANDARD OF 2015 INTERNATIONAL BUILDING CODE & 2016 CALIFORNIA BUILDING CODE.

SEISMIC DESIGN CRITERIA

-SDS = 1.5 ap = 2.5
-I = 1.5 Rp = 6.0

WIND DESIGN CRITERIA

-MAX 60 FT TALL BUILDING
-EXPOSURE C
-130 MPH, 3 SECOND GUST WIND

NOTE:

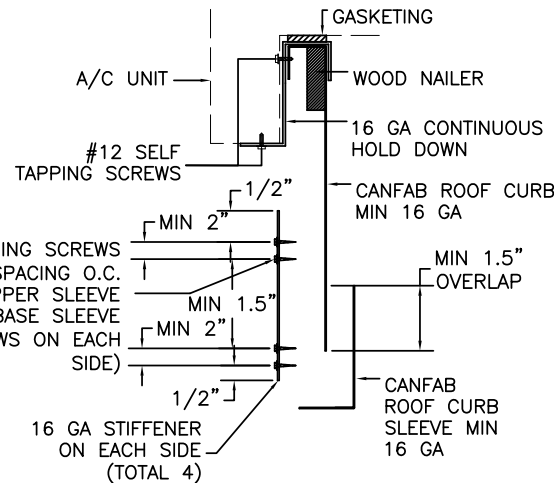
INSTALLER TO VERIFY WITH A LICENSED STRUCTURAL ENGINEER IN THE CORRESPONDING STATE THE ADEQUACY OF THE STRUCTURE FOR LOADS IMPOSED BY THE UNIT AND THE CURB IN ADDITION TO ALL OTHER LOADS.
-INSTALLER TO VERIFY WITH A LICENSED STRUCTURAL ENGINEER IN THE CORRESPONDING STATE THAT THE SEISMIC AND WIND DESIGN CRITERIA NOTED ON THIS DRAWING ARE ADEQUATE FOR THE SITE SPECIFIC VALUES. OTHERWISE, CONTACT CANNON FABRICATION FOR A SITE SPECIFIC ANALYSIS AND DRAWINGS.

CURB AND UNIT INFORMATION

16 GAUGE GALVANIZED STEEL CURB
1003A-CB11*-CBCG 11" 142 LBS.
1003A-CB14*-CBCG 14" 153 LBS.

MAX UNIT OPERATING WEIGHT 450 LBS

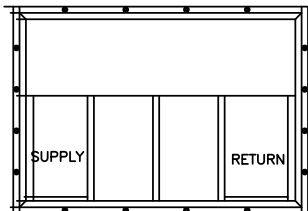
CGX FROM CORNER = 22.5" PARALLEL TO LENGTH
CGY FROM CORNER = 15.5" PARALLEL TO WIDTH
CGH FROM BOTTOM OF UNIT = 17.6"



#14 SELF TAPPING SCREWS @ 15" MAX SPACING O.C. 2 ROWS ON UPPER SLEEVE 2 ROWS ON BASE SLEEVE (TOTAL 4 ROWS ON EACH SIDE)

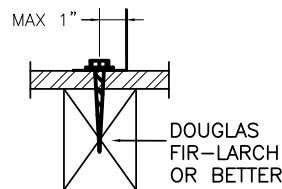
ANCHORAGE DETAILS TO ROOF:

CLIP LOCATION DETAIL



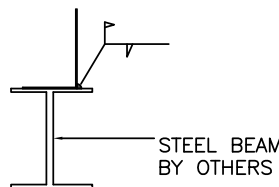
#12 SELF TAPPING SCREWS.
(7) EACH LONG SIDE OF CURB
(7) EACH SHORT SIDE OF CURB
SEE CURB CUT-SECTION DETAIL

ATTACHMENT TO WOOD



(12) 3/8"x4" LAG SCREWS, HALF EACH LONG SIDE.
(10) 3/8"x4" LAG SCREWS, HALF EACH SHORT SIDE.

ATTACHMENT TO STRUCTURAL STEEL



1/8" FILLET WELD.
2" LONG @ 48" ON CENTER
PROVIDE MIN 2 CONNECTIONS EACH SIDE.

ATTACHMENT TO STRUCTURAL CONCRETE



(6) 1/2" HILTI KWIK BOLT TZ SS 304, HALF EACH LONG SIDE.
(6) 1/2" HILTI KWIK BOLT TZ SS 304, HALF EACH SHORT SIDE.
MIN 5" AWAY FROM CONC. EDGE (INSTALL PER ICC-ES ESR-1917). STRUCTURALLY ACCEPTABLE TO SUBSTITUTE HILTI KBTZ STAINLESS STEEL BOLTS WITH HILTI KBTZ CARBON STEEL BOLTS ONLY IF ALL THE BOLTS ARE COMPLETELY WATERPROOFED AND PROTECTED AGAINST THE WEATHER.

STRUCTURAL REVIEW BY:

MARTIN & associates

JOHN A. MARTIN AND ASSOCIATES
Structural Engineers
950 South Grand Ave., 4th Floor
Los Angeles, California 90015
Phone (213) 483 6490
Fax (213) 483 3084
Job No.: 13001



9/6/2018



182 GRANITE STREET, SUITE 101, CORONA, CA 92879

PHONE: (951) 278-1830 FAX: (951) 278-8444 www.canfab.com canfab@canfab.com

FOR: CARRIER ADJUSTABLE PITCH CURB

PART NO: 1003A-CB***-CBCG

PROJECT:

ENGINEER: LD

DISTRIBUTOR:

DRAWING NO: 1003ACA.DWG

DATE: 8.20.18

APPROVED BY:

DATE: / /