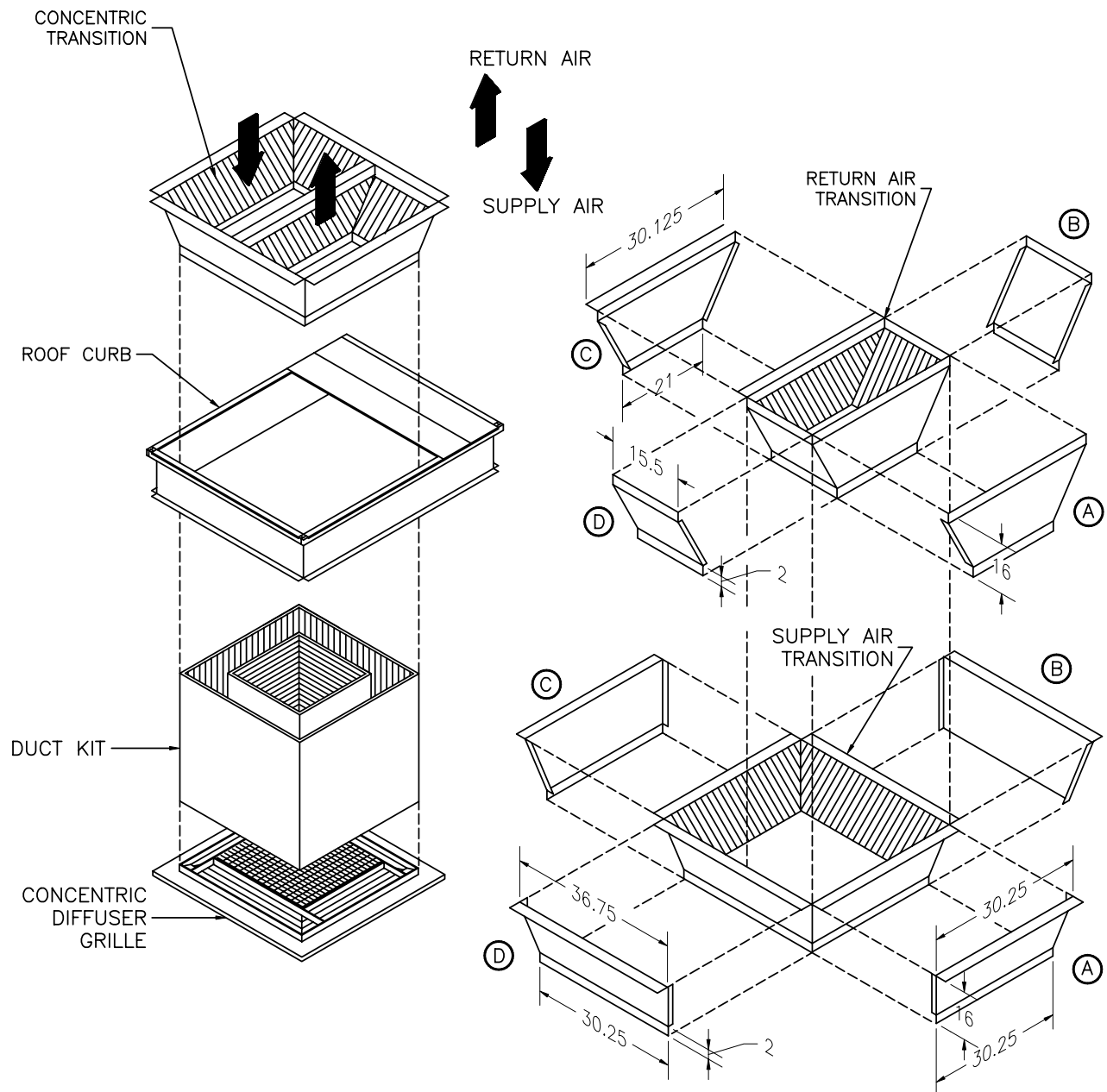


CONCENTRIC DIFFUSER INSTALLATION INSTRUCTIONS 1305 GROUP



- 1 - FOLLOW ROOF CURB INSTALLATION INSTRUCTIONS. DO NOT INSTALL DUCT SUPPORTS.
- 2 - ASSEMBLE SUPPLY TRANSITION.
- 3 - PLACE SUPPLY TRANSITION INTO PLACE IN CURB AS SHOWN.
- 4 - ASSEMBLE RETURN TRANSITION.
- 5 - SECURE RETURN TRANSITION IN POSITION INSIDE SUPPLY TRANSITION AS SHOWN.
- 6 - ASSEMBLE DUCTWORK, SECURE RETURN DUCT RETURN COLLAR ON DIFFUSER.
- 7 - SECURE SUPPLY DUCT TO SUPPLY COLLAR ON DIFFUSER.
- 8 - LIFT DIFFUSER/DUCT INTO POSITION AND HANG IN PLACE PER LOCAL CODE. TAPE AND CAULK AS REQUIRED.

CONCENTRIC ADAPTOR

PIECES WILL BE LETTERED AS SHOWN FOR EASY ASSEMBLY