

8412 "GA" SERIES MIXING BOXES

FEATURES

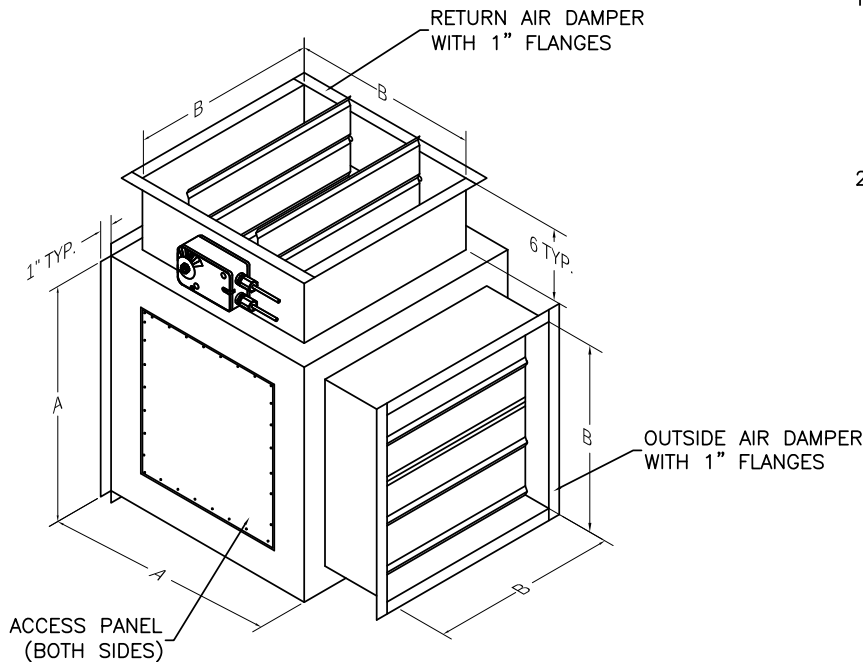
- FOR SINGLE OR 2 SPEED INDOOR FAN UNITS, OTHER CONTROL OPTIONS ARE AVAILABLE
- FULLY CONFIGURABLE DAMPERS, ANY LOCATION CAN BE OUTSIDE AIR OR RETURN AIR
- FULL INTERNAL INSULATION
- FACTORY INSTALLED HONEYWELL JADE W7220 ECONOMIZER CONTROL SYSTEM, CERTIFIED FDD PRODUCT CALIFORNIA TITLE 24, PART 6 HJW10
- FACTORY MOUNTED CONTROLS
- LOW LEAK DAMPER

NOTES:

RELIEF DAMPER IS NOT SUPPLIED STANDARD BUT IS REQUIRED FOR CA, TITLE 24. THIS CAN BE FIELD SUPPLIED AND INSTALLED, OR AS AN OPTION

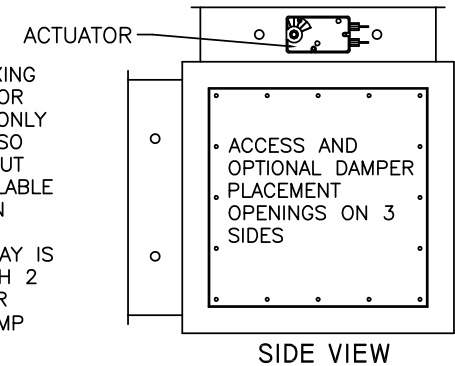
ECONOMIZERS MEET TITLE 24, 2013 PRESCRIPTIVE SECTION 140.4(E) 4(E) (A,B,C,AND,H), D,E,F, AND G WHEN SUPPLIED WITH CONTROLS, AND ASHRAE STANDARD 90.1-2010, TABLE 6.4.3.4.4 REQUIREMENTS. 5 YEAR PARTS AND COMPONENTS WARRANTY. DAMPER LIFE CYCLE TESTING AND LEAKAGE, RELIEF, SENSOR SET POINT, RELIABILITY, CALIBRATION, AND HIGH LIMIT.

ECONOMIZERS MEET TITLE 24, 2013, MANDATORY SECTION 120.2 ECONOMIZER FAULT AND DETECTION DIAGNOSTIC REQUIREMENTS, WHEN SUPPLIED WITH CONTROLS.



NOTE:

1. STANDARD MIXING BOXES ARE FOR INDOOR USE ONLY AND ARE ALSO GALVANIZED BUT PAINT IS AVAILABLE AS AN OPTION
2. OPTIONAL RELAY IS REQUIRED WITH 2 SPEED INDOOR FAN/HEAT PUMP



CONTROL OPTIONS	
<input type="checkbox"/>	CDE HONEYWELL COMMUNICATING ACTUATOR W/ DRY BULB CONTROLS
<input type="checkbox"/>	CEE HONEYWELL COMMUNICATING ACTUATOR W/ ENTHALPY CONTROLS
<input type="checkbox"/>	CBE HONEYWELL COMMUNICATING ACTUATOR W/ DIFFERENTIAL ADJUSTABLE DRY BULB CONTROLS
<input type="checkbox"/>	CCE HONEYWELL COMMUNICATING ACTUATOR W/ DIFFERENTIAL ENTHALPY CONTROLS
<input type="checkbox"/>	CNN HONEYWELL COMMUNICATING ACTUATOR W/ FEEDBACK NON COMMUNICATING

8412 SERIES "GA" DAMPER PERFORMANCE DATA CHART

MODEL	DAMPER SIZE	CFM	VELOCITY	PD	CFM	VELOCITY	PD	CFM	VELOCITY	PD	CFM	VELOCITY	PD	WEIGHT
8412-MB01	12X12	800	800 FPM	0.02	1200	1200 FPM	0.05	1600	1600 FPM	0.09	2000	2000 FPM	0.15	38 LBS.
8412-MB02	15X15	800	513 FPM	0.01	1200	769 FPM	0.01	1600	1026 FPM	0.02	2000	1282 FPM	0.03	58 LBS.
8412-MB03	18X18	800	356 FPM	0.01	1200	533 FPM	0.01	1600	711 FPM	0.01	2000	889 FPM	0.01	70 LBS.



182 GRANITE STREET, SUITE 101, CORONA, CA 92879
 PHONE: (951)278-1830 FAX: (951)278-8444 www.canfab.com canfab@canfab.com

FOR:

PART NO:

PROJECT:

ENGINEER:

DISTRIBUTOR:

DRAWING NO:

JM

12/8/2016

DATE:

APPROVED BY:

DATE: / /